

Climate Monitor WxGoos-2

Low-cost, rack-mounted environment and access monitor for racks, cabinets and server rooms. Full set of internal sensors, LCD display, warning horn.

This self-contained unit continually monitors climate conditions and displays them via an internally-generated web page. Values are locally shown on a built-in display. The values are continuously graphed for easily seen trends.

When user-defined thresholds are exceeded, alarms can be sent via e-mail, audio alarm, or SNMP trap. The alarm can be silenced locally. No client software is required.

No client software or other support software is needed. Installation is simple using an intuitive web interface. Use DHCP or assign a static IP address.

A full set of sensors is included inside the unit:

- Temperature
- Humidity
- Air Flow
- Light
- Sound
- Door Position
- Web Cam (external)

A variety of remote sensors are easily added. Up to 16 remote sensors can be added using Category 3 telephone wire and RJ-11 connectors. Remote sensors include:

- Temperature
- Air Flow/Temperature
- Water
- Current (ac amps)
- Power (volts, amps, watts)
- Motion

Remote sensors allows the unit to monitor up to 16 cabinets hundreds of feet distant or show the status of air-conditioning outputs. There are five remote sensor jacks on the unit. Simple splitters expand to use all 16 sensors.

Software protocols include:

- Web (HTTP)
- SMTP/POP
- SNMP (full MIB)
- FTP (firmware upgrades)
- Graphing
- PDA display format
- WAP (cell phone display)
- XML
- Excel™

Real-time values are continually displayed on a 2 line by 8 character backlit LCD display for local viewing.

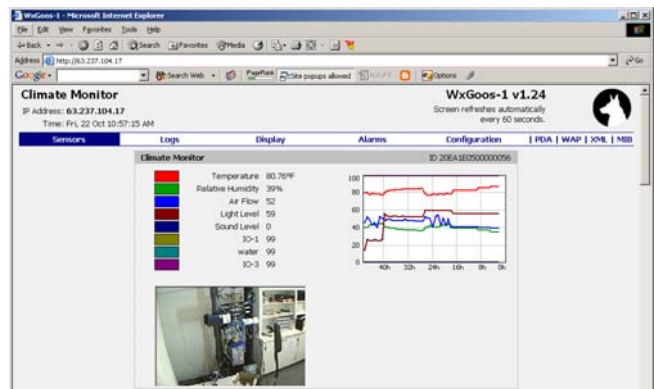
The web cam recommended is an IP-based Axis 205; it can be installed locally or remotely.

Firmware updates can be made by FTP file transfer which eliminates returning the unit to the factory.

All jacks are front panel mounted. Remote sensors can be located hundreds of feet away. The unit is powered by a 6vdc wall transformer (included).



The compact Climate Monitor occupies a 1-U space and contains a complete set of internal sensors. The optional web cam is remotely mounted. A variety of remote sensors are easily added.



A web page displays the current values with graphs showing trends. The web cam image is JPEG format. The data can be viewed on a PDA and cell phone. The unit is configured via the web page. Multiple alarm thresholds can be set with multiple e-mail alarm addresses.



All connections are made through the front panel. No client software or installation CD is required. The user connects an Ethernet cable, sets the IP address and begins using the unit. An LCD constantly displays the sensor values.

IT Watchdogs, Inc.

512-257-1462
www.itwatchdogs.com